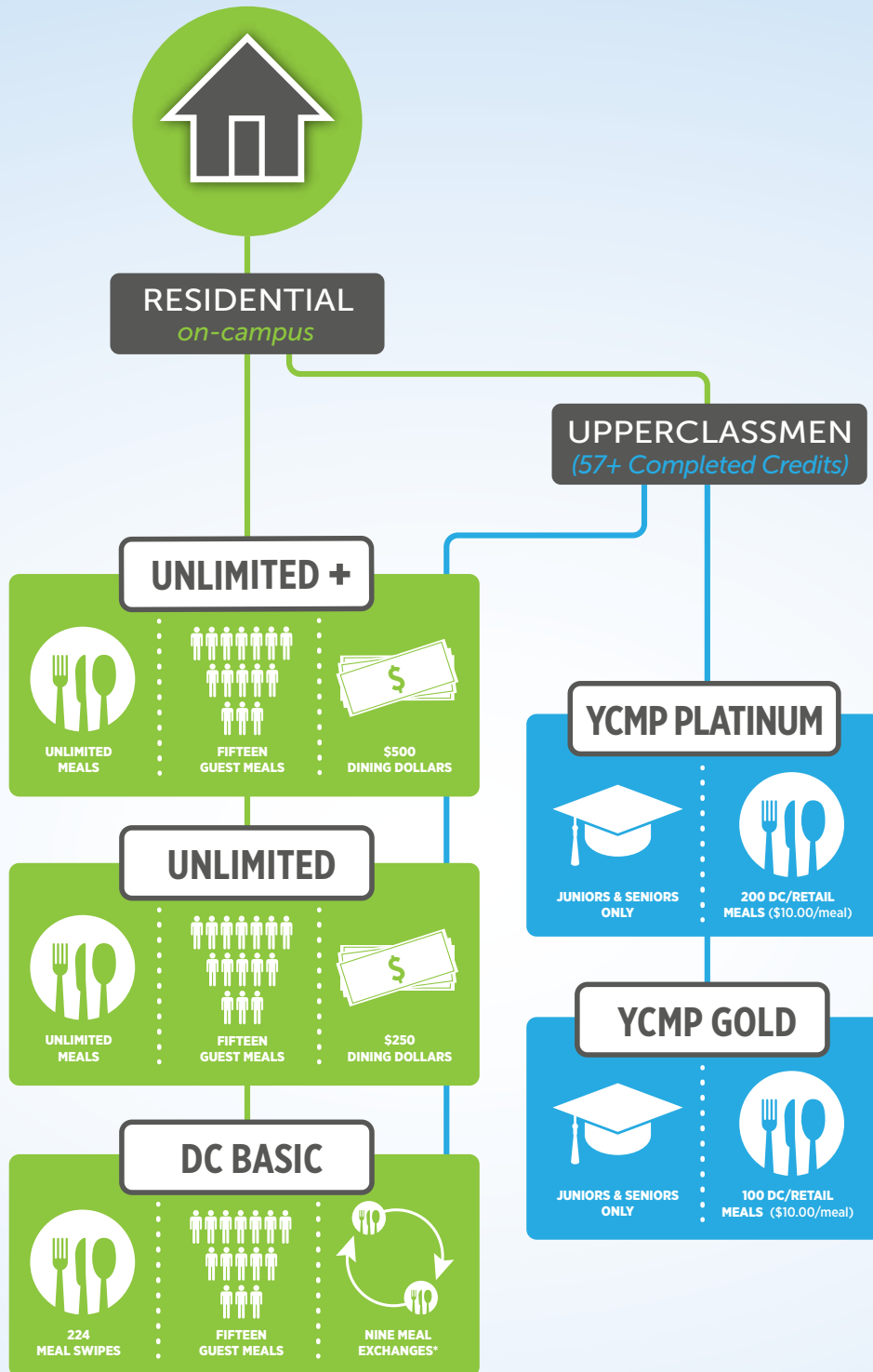


# Selecting A Meal Plan at UMass Dining

2017-2018 DINING OPTIONS



## Dining Dollars

A dollar-for-dollar exchange accepted at any UMass dining retail or residential location!

- Dining Dollars rollover during the academic year
- Add more Dining Dollars to any Unlimited or YCMP Off-Campus Plan at any time!

- \* Meal Exchanges can be used at any official UMass Dining retail operations with a value of \$10.00 per meal.
- Graduate students and students living in Apartment Style Housing (excluding freshmen) can choose any of the Residential OR YCMP Off-Campus Plans.

# Selecting A Meal Plan at UMass Dining

2017-2018 DINING OPTIONS



**COMMUTER**  
*off-campus*

**YCMP Off-Campus 155**



155 DC/RETAIL  
MEALS



\$200  
DINING DOLLARS

**ANY RESIDENTIAL  
MEAL PLAN**

Including **UNLIMITED+**, **UNLIMITED**,  
**DC BASIC** OR **YCMP PLATINUM/GOLD PLANS**

**YCMP Off-Campus 65**



65 DC/RETAIL  
MEALS



\$125  
DINING DOLLARS

**YCMP On The Go**



5 DC MEALS



\$800  
DINING DOLLARS



## Dining Dollars

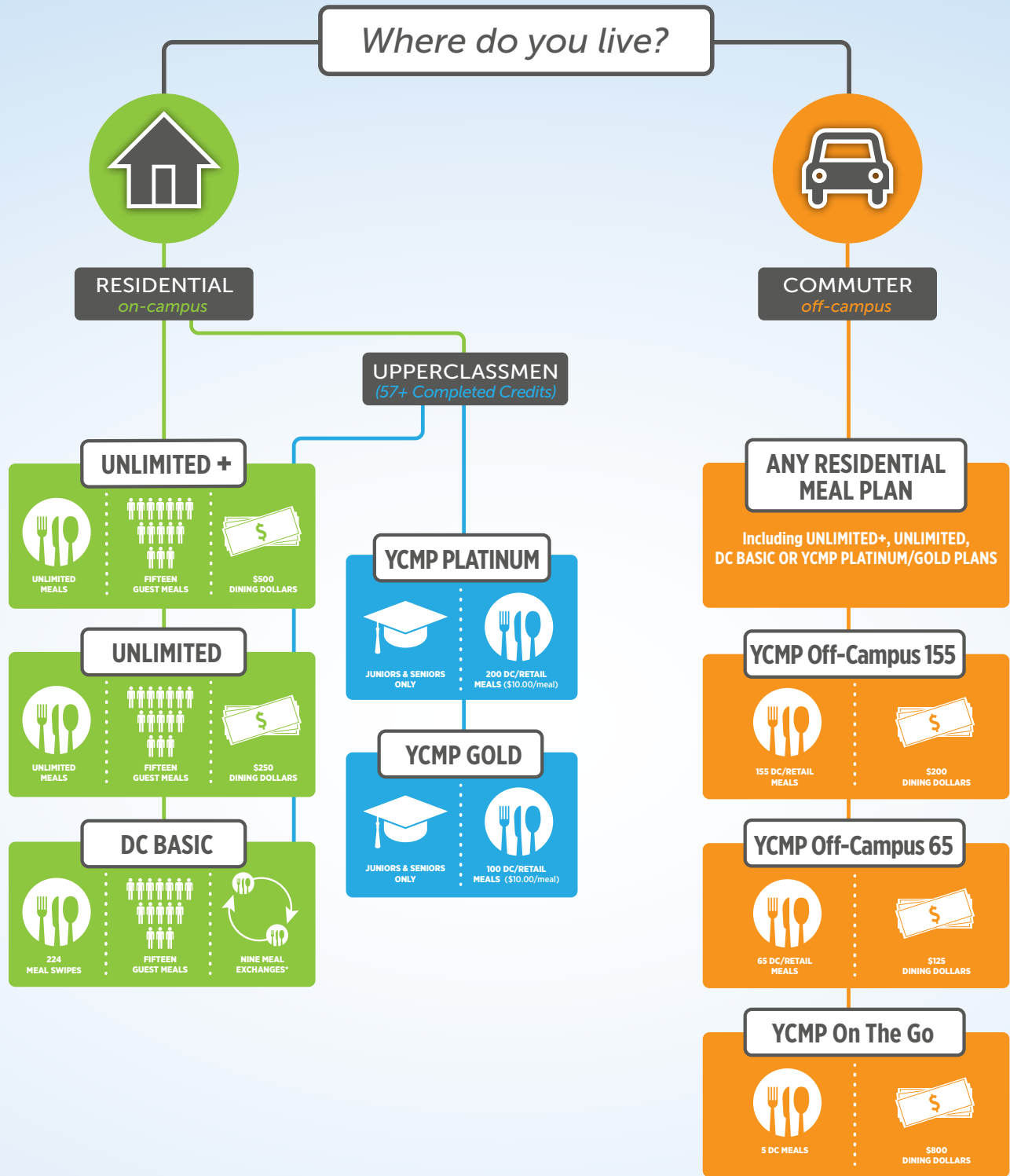
A dollar-for-dollar exchange accepted at any UMass dining retail or residential location!

- Dining Dollars rollover during the academic year
- Add more Dining Dollars to any Unlimited or YCMP Off-Campus Plan at any time!

- \* Meal Exchanges can be used at any official UMass Dining retail operations with a value of \$10.00 per meal.
- Graduate students and students living in Apartment Style Housing (excluding freshmen) can choose any of the Residential OR YCMP Off-Campus Plans.

# Selecting A Meal Plan at UMass Dining

2017-2018 DINING OPTIONS



## Dining Dollars

A dollar-for-dollar exchange accepted at any UMass dining retail or residential location!

- Dining Dollars rollover during the academic year
- Add more Dining Dollars to any Unlimited or YCMP Off-Campus Plan at any time!

- \* Meal Exchanges can be used at any official UMass Dining retail operations with a value of \$10.00 per meal.
- Graduate students and students living in Apartment Style Housing (excluding freshmen) can choose any of the Residential OR YCMP Off-Campus Plans.